

A topographic map of the state of Missouri, showing elevation contours and major water bodies. The map uses a color gradient from green (low elevation) to brown and orange (high elevation). The text "State of Missouri Office of Geospatial Information" is overlaid in the center of the map.

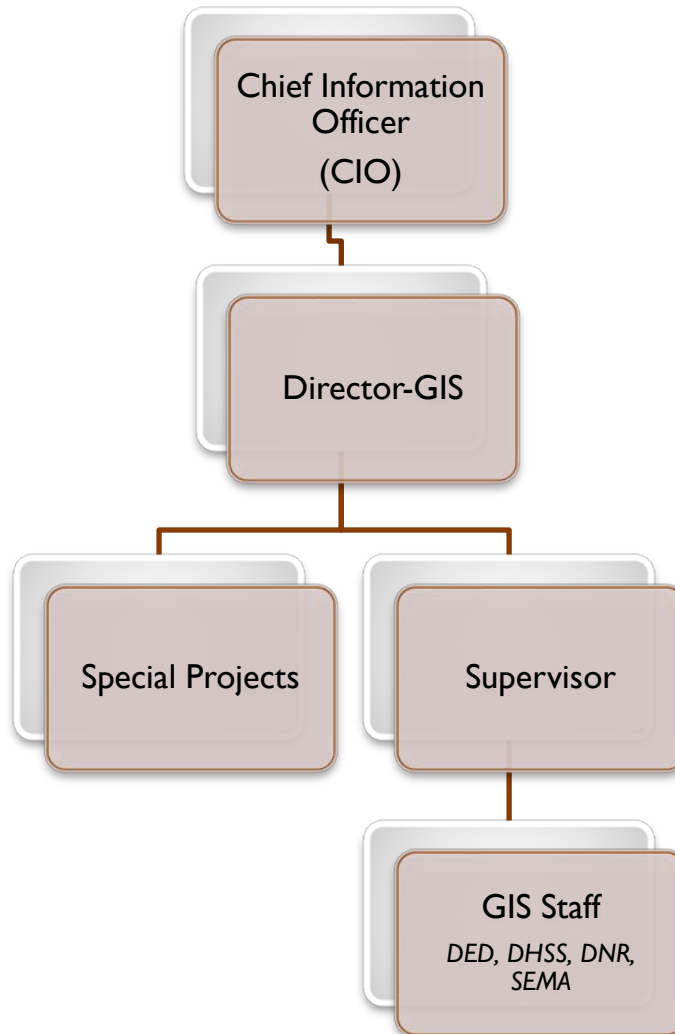
State of Missouri Office of Geospatial Information

**North Central Region
Geospatial Symposium**

October 24, 2012

Office of Geospatial Information

Organizational Structure/Staff



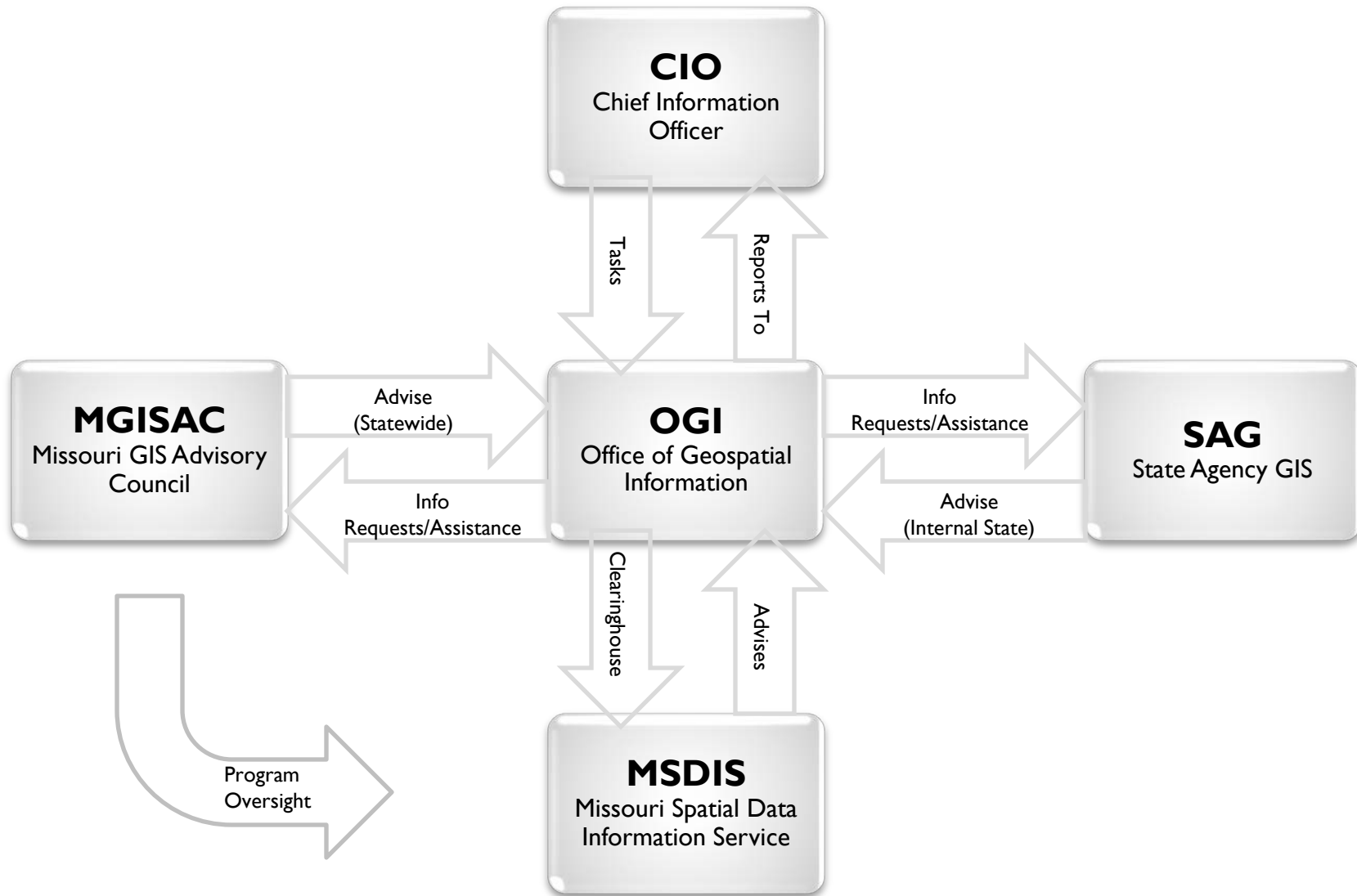
Staff

Paul Wright – Director
Debbie Briedwell – Supervisor
Jeff Schloss – Coordinator

Ron Curry
Rodney Distler
Colin Duewell
Alexis Giesecker
Jeff Patridge
Mustafa Rahim
Elizabeth Retherford
Barb Ruppel
Tracy Schloss
Steve Vance

Office of Geospatial Information

Organizational Relationships



Office of Geospatial Information Services

GIS Analysis and Design

Spatial Database Design & Development

GIS Data Creation and Maintenance

GIS Application Development

GIS/GPS Technical Support & Training

Cartographic Services

Emergency GIS Support

Office of Geospatial Information

Project Update

- RFQ (request for quote) for aerial imagery/LiDAR to provide a list of preselected vendors.
- Enterprise geo-coding solution.
- State data portal, <https://data.mo.gov/>
- Google implementation
- WebEOC implementation (emergency operations center)
- Redistricting related efforts
- Updating the county USNG map books. Should be completed by February.

Office of Geospatial Information

Contact Information

Director - Geographic Information Systems

Paul G. Wright

Paul.Wright@oa.mo.gov

Office of Geospatial Information Website/Email

<http://oa.mo.gov/itsd/gis/>

MO.GIS@oa.mo.gov