

Esri Update

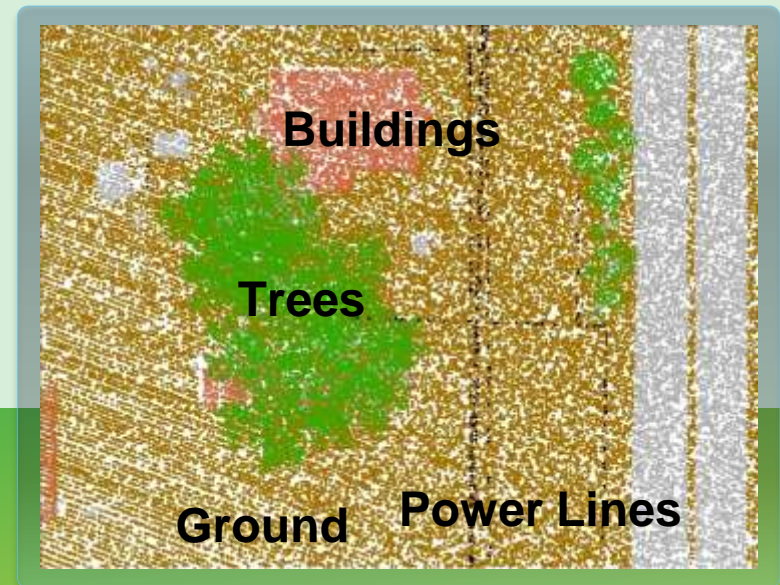
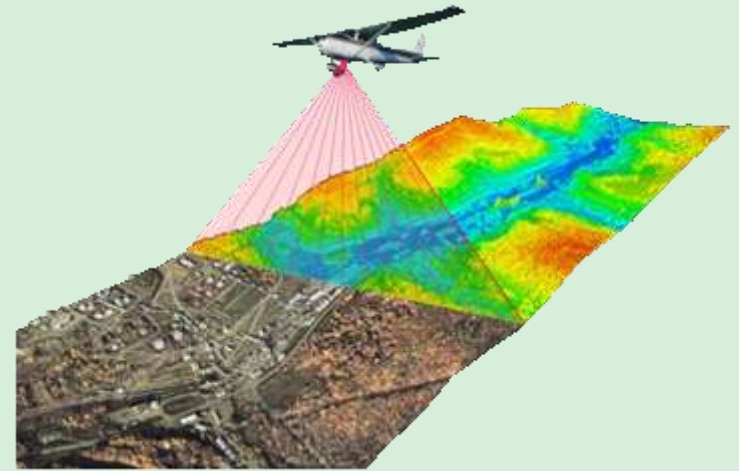
Lidar and ArcGIS Online

Jennifer Kuntz



Lidar Concepts

- Light Detection and Ranging
- Points with attributes
- Very big datasets
- LAS files

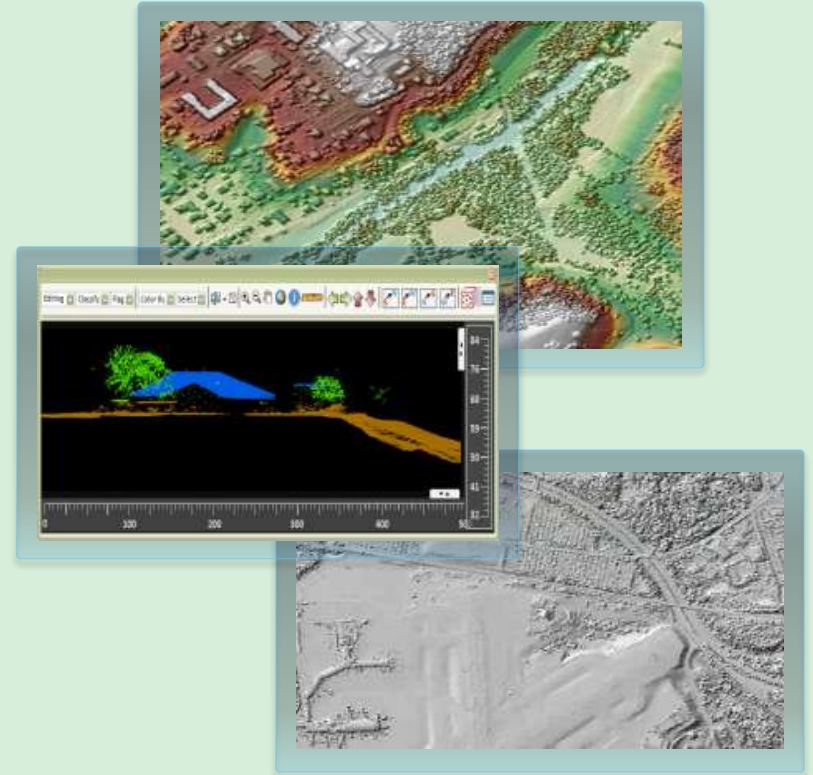


What Can I Do with Lidar?

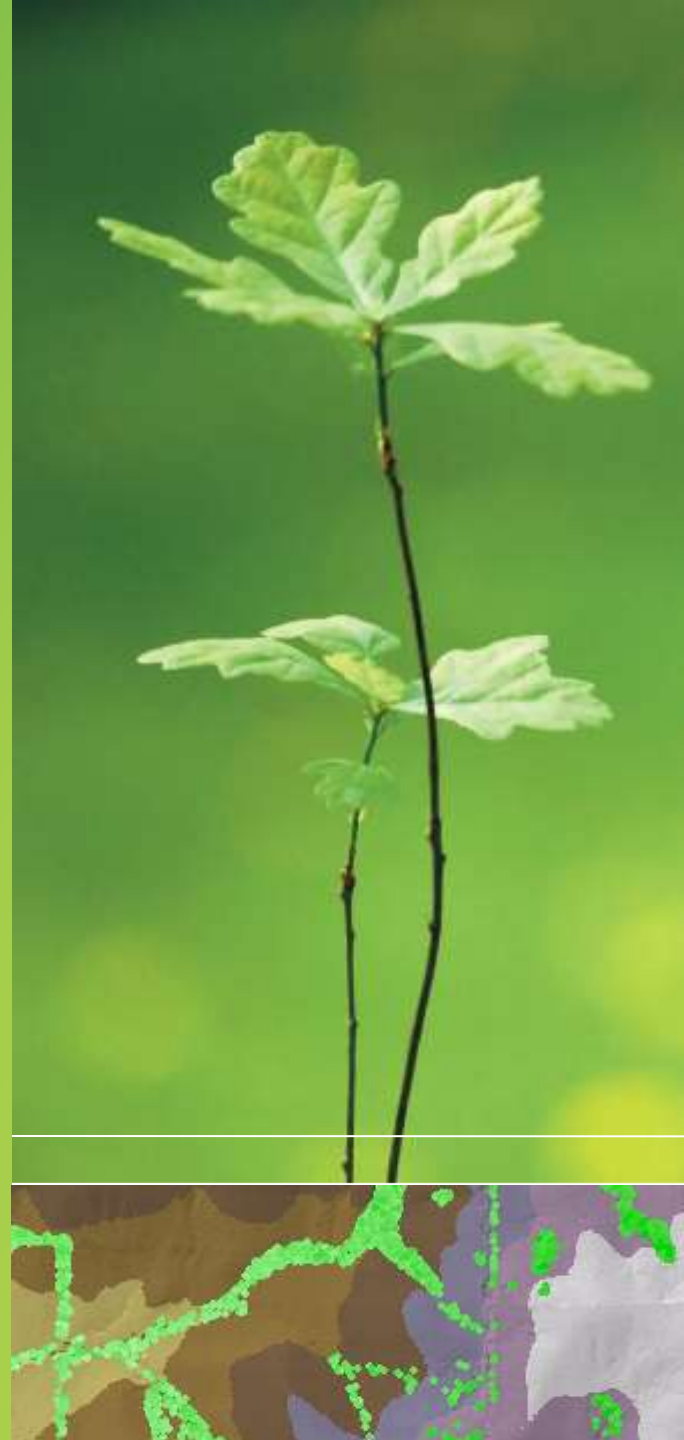
- Display points by attribute in 2D
- Make Digital Elevation or Surface Models
- Display elevation in 3D
- Forest canopy density and height
- Change detection (great for assessors!)
- More...

Lidar in ArcGIS 10.1

- Native LAS
- Dynamic mosaicking
- 3D visualization
- Reclassification
- Image Service Publishing
- Analysis



Working with Lidar in ArcGIS 10.1



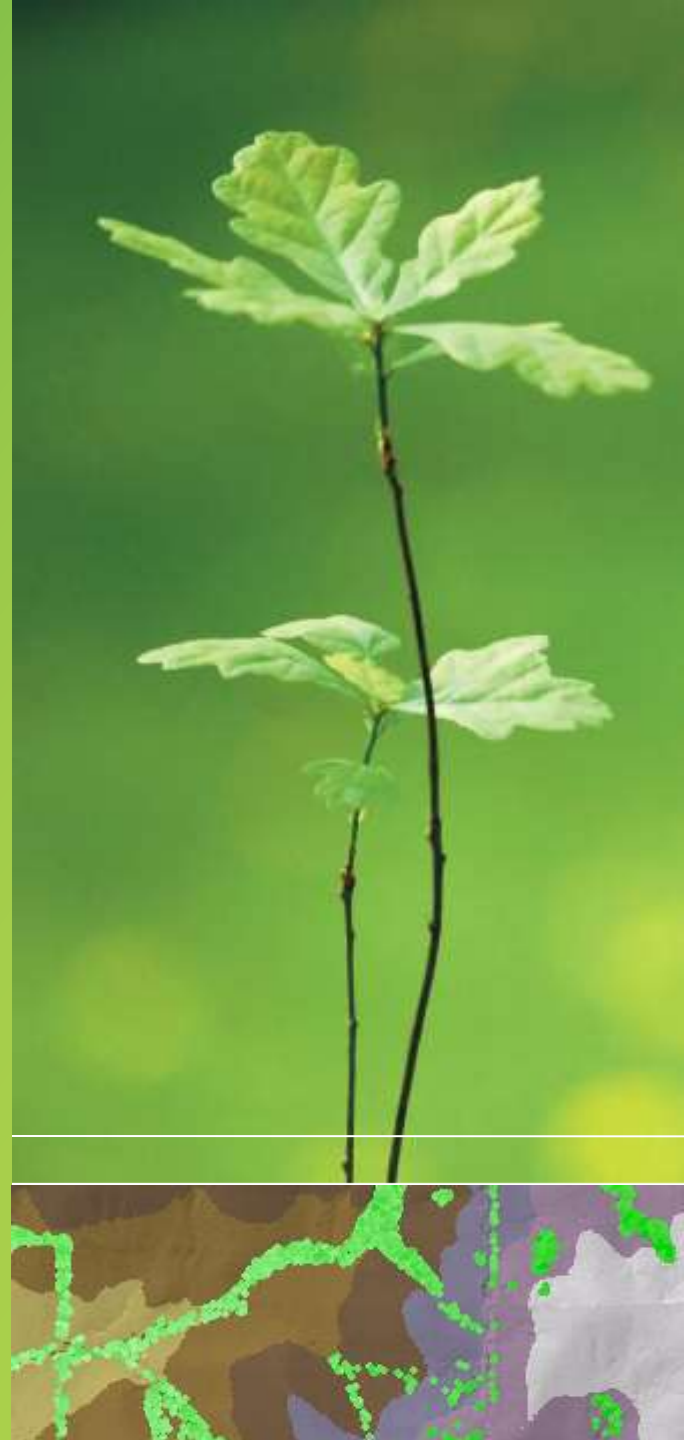
Licensing

- Standard, 3D, or Spatial Analyst Extension
 - Create LAS or Mosaic datasets
 - Rasterize
- 3D Analyst Extension
 - Edit class codes
 - View in 3D
 - TIN based surface analysis
- ArcGIS for Server with Image Extension
 - Publish web service

Where Can I Learn More?

- [Working with Lidar Data in ArcGIS 10.1](#)
- [Esri Video](#) (search for lidar)
- ArcGIS Help 10.1
 - [LAS dataset topics](#)
 - [Lidar solutions in ArcGIS](#)
- [ArcGIS Blog](#)
 - See Lidar Solutions in ArcGIS multi-part series

Extending the Reach of GIS in Your Organization Using ArcGIS Online

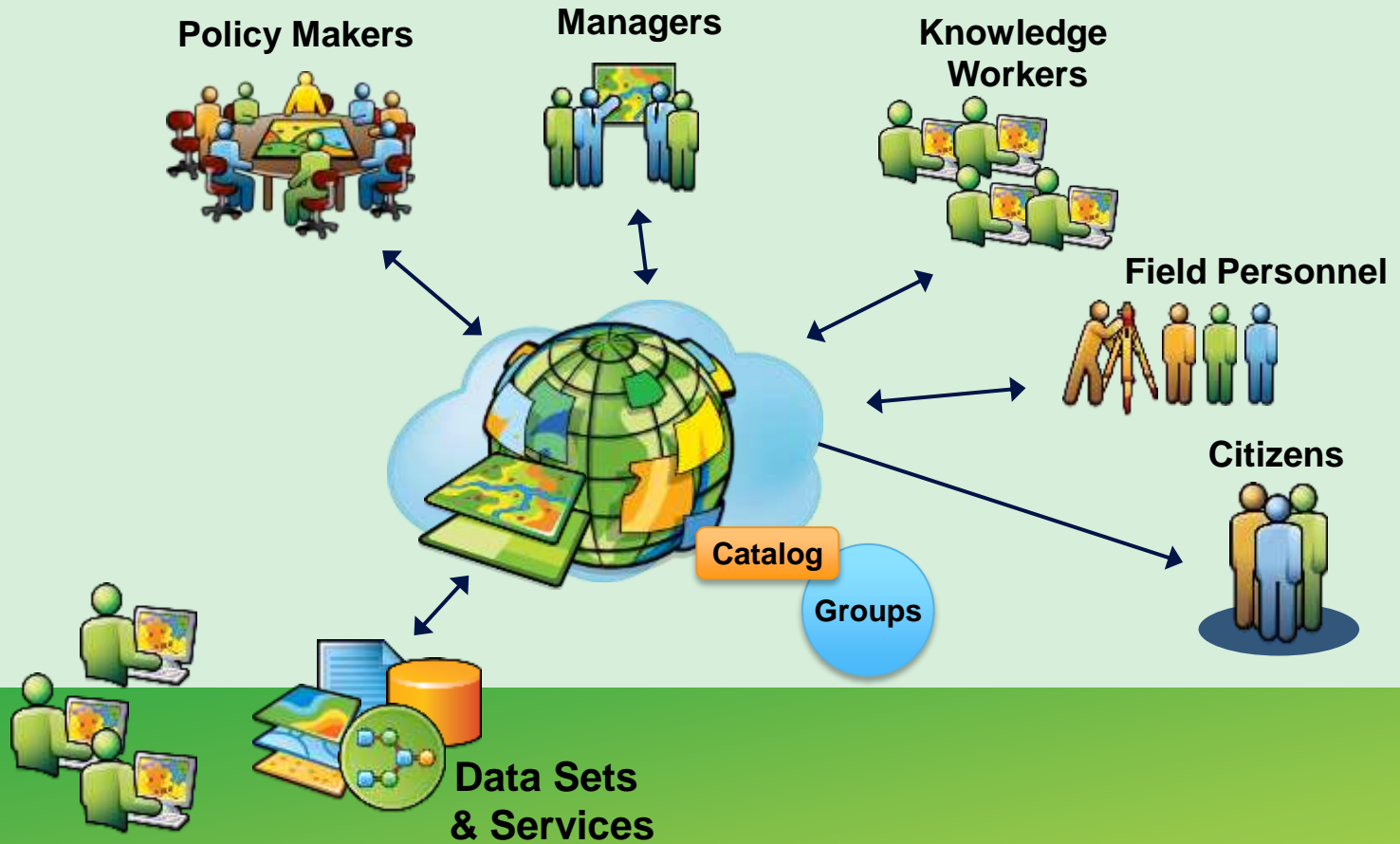


ArcGIS Online is a New GIS Pattern



An open platform for maps and geographic information

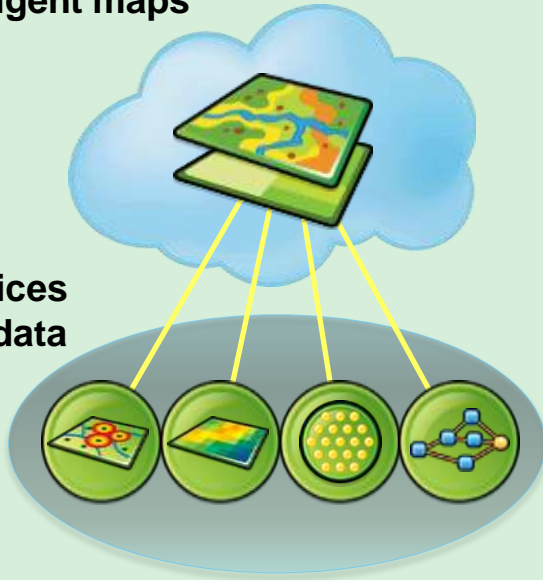
ArcGIS Online Unlocks Your Organization's Geospatial Assets



Easy to Create and Share Intelligent Web Maps

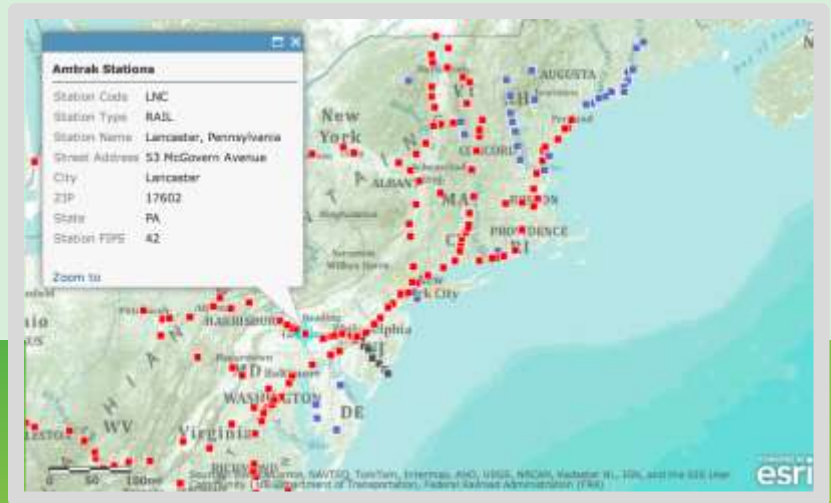
Intelligent maps

Services and data



Supporting

- Feature Editing
- Pop-ups
- Time



Intelligent Web Maps Can Be Used Everywhere



Enhancing access and collaboration

Implementing ArcGIS Online for Your Organization

The image displays the ArcGIS Online administration interface for an organization named "Esri St. Louis". The interface is divided into two main sections: a left-hand navigation pane and a main content area.

Left-hand Navigation Pane:

- Resource Center | Show: Web Content Only
- HOME | GALLERY | MAP | GROUPS | MY CONTENT
- Save | Cancel
- General
- Home Page
- Gallery
- Map**
- Groups
- Security

Main Content Area:

- Resource Center | Show: Web Content Only | My Organization | Jennifer kuntz | Notifications | Help | Sign Out
- HOME | GALLERY | MAP | GROUPS | MY CONTENT | Find maps, applications and more... Q
- Esri St. Louis | esri
- Featured Maps for the Esri St. Louis Organization
 - 2012 Missouri Drought
 - Kansas City, KS Land Bank Properties
 - Comparison of 2010 and 2012 Kansas House
 - Saint Louis Biking with Elevation
- Make a Map »
Create a map that can be viewed in a browser, desktop or mobile device. Share it on a blog, via email, or embed it in a website.
- ArcGIS Online for Developers »
Build custom web and mobile applications that incorporate your maps and data.

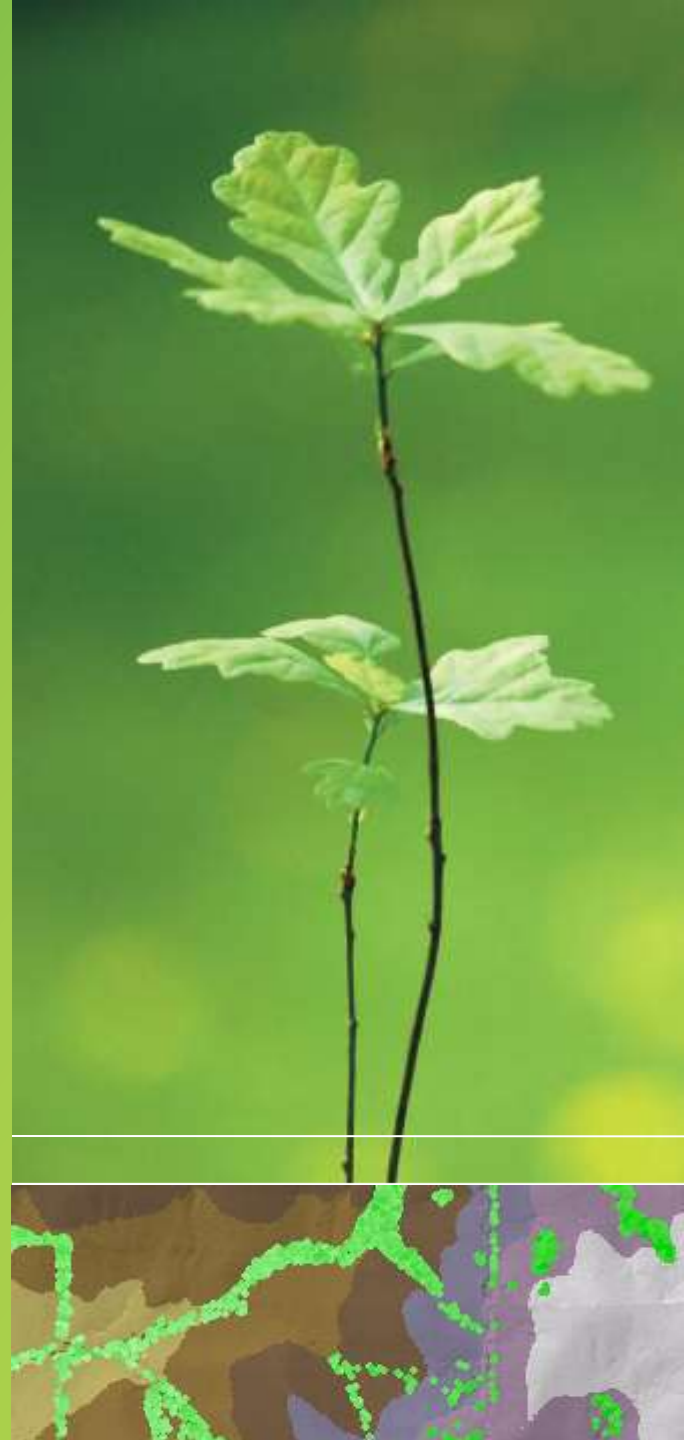
At the bottom of the page, there are links for: Esri.com | Terms of Use | Privacy | Contact Us | Report Abuse.

Hosted Map Services

- Create feature and tile services
- Publish from
 - ArcGIS for Desktop 10.1
 - CSVs
 - Shapefiles
 - Excel
- Hosted and managed to meet demand



ArcGIS Online: Some Favorite Examples



Where Can I Learn More?

- Online Training Seminars
- Esri Video
- ArcGIS.com Help
 - Videos in help
- ArcGIS Blog
- Free Trial



jkuntz@esri.com